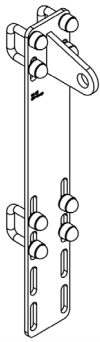


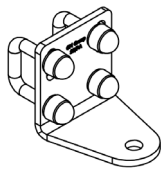


## Fixing on rungs

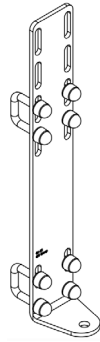
Rung width: 33mm maximum  
Span between rungs: 250mm < e < 400mm



Top fixing bracket on rungs



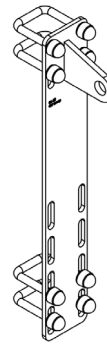
Lower fixing bracket on square rungs



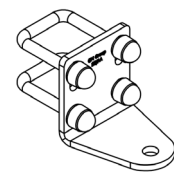
Lower fixing bracket on round rungs

## Fixing on lateral upright

Rung spacing 250mm < e < 400mm,  
Rung width ≤ 33mm



Top fixing bracket on lateral upright



Lower fixing bracket on lateral upright

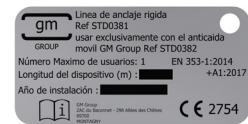
## Components - Accessories



Cable lead



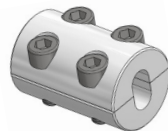
Stainless steel cable Ø8



Identification card



Tensor + Pre-adjustor

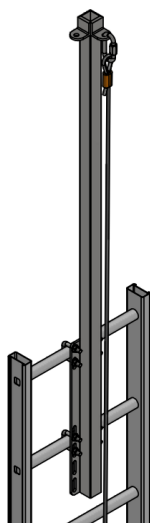


Device for manual crimping

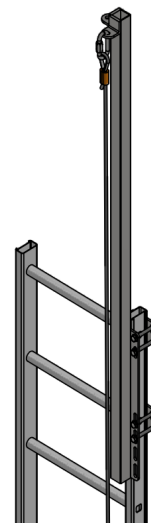


Fall arrest shuttle

## Extension option for ladder exit



Extension fixed on rungs height 1500 mm



Extension fixed on lateral upright height 1500 mm



## EU DECLARATION OF CONFORMITY

**GM Group**  
298 Allées des Chênes  
ZAC du Baconnet  
69700 MONTAGNY  
France

Hereby declares that the new PPE described hereafter :

Trade mark : GM Group  
Manufacturer : Ajuva Safety  
Reference : Cable Fall Arrester LNC0085  
Type : guided type fall arresters including a rigid anchor line

-is in conformity with the PPE Regulation n° 2016/425  
-is in conformity with the standard EN 353-1 :2014+A1 :2017

-is identical to the PPE which is the subject of EU Type Examination  
Certificate n°2927/1843/160/11/24/0100, issued by :

QUINTIN CERTIFICATION SAS n°2927  
825 route de Romans  
38160 Saint Antoine-de l'Abbaye  
FRANCE

- is subject to the conformity to type assessment procedure based on internal  
production control and supervised product checks at random intervals (module C2)  
under the surveillance of the same notified body.

This declaration of conformity is issued under the sole responsibility of the  
manufacturer.

Written in Montagny, the 21/01/2025,

Loris Tassin  
*R&D Manager*

A handwritten signature in black ink, appearing to read 'L. Tassin', written in a cursive style.